

EVIL SIEGE™

PP[®]
Pro performance

PROPEL PEARL COVERSTOCK

Introducing **Propel Pearl** coverstock, the next extension in Brunswick coverstock technology. **Propel Pearl** is an evolutionary coverstock developed by Brunswick to improve the mid-lane and backend traction of the ball on today's slicker oils and lane surfaces. The **Propel Pearl** coverstock was discovered through testing of new formulation additives and process changes in coverstock manufacturing.

MACE CORE

Mechanical Asymmetric Core Engineering. The **MACE** core has three major benefits: ultra low RG core system to engage the **Propel Pearl** coverstock, high RG differential to aid in traction through heavy oil and high RG asymmetric differential to quicken the response time to friction. Designed as a two-component elliptical core system, the **MACE** core is dynamically the strongest asymmetric core ever produced for a Brunswick ball.

BALL MOTION

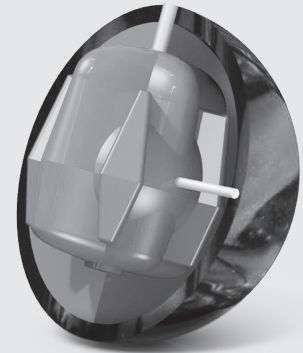
The **Evil Siege** unites the new **Propel Pearl** coverstock and the proven **MACE** core to produce a ball motion that is strong in the mid-lane and aggressive on the backend. The **Evil Siege** is the ball when your game needs help battling medium to oily conditions and poor pin action.

REACTION SETUP

The **Evil Siege** can be drilled using the standard drilling techniques developed for asymmetric bowling balls. Please visit brunswickbowling.com/drilling_information to view the drilling instructions for specific reaction characteristics and layout details.

LIGHTWEIGHT ENGINEERING

The unique core shape of each Brunswick ball is used for weights from 14 to 16 pounds. This approach to lightweight ball engineering provides bowlers with consistent ball reaction characteristics across this weight range. The same drilling instructions can be used for 12- and 13-pound balls. This is because Brunswick uses a generic core shape with an RG differential that is close enough to the 14-16 pound shape.



SPECIFICATIONS

| | | | |
|------------------|------------------|------|------------------|
| Hook Potential | Low (10) | 160 | High (175) |
| Length | Early (25) | 110 | Long (235) |
| Breakpoint Shape | Smooth Arc (10) | 90 | Angular (100) |
| RG Differential | Low (0) | .056 | High (.060) |
| RG Average | Center Heavy (1) | 2.8 | Cover Heavy (10) |

- MACE Core
- Propel Pearl Coverstock
- 2-Color Pearl, Red/Black
- Hardness: 75-76
- 4,000-Grit Micro Pad Finish
- Chart Position: R-4
- Part No. 60-105248-93X



16 LB 15 LB 14 LB 13 LB 12 LB

| | | | | | |
|---------|-------|-------|-------|-------|-------|
| RG-MAX | 2.530 | 2.546 | 2.566 | 2.632 | 2.655 |
| RG-INT | 2.500 | 2.516 | 2.537 | 2.621 | 2.644 |
| RG-MIN | 2.474 | 2.490 | 2.510 | 2.589 | 2.612 |
| RG-DIFF | 0.056 | 0.056 | 0.056 | 0.043 | 0.043 |
| RG-ASY. | 0.030 | 0.030 | 0.029 | 0.011 | 0.011 |



Brunswick[®]
brunswickbowling.com

MAINTAINING YOUR BALL REACTION

Micro finishing pads have revolutionized the bowling industry by creating smooth surface finishes that many bowlers would assume are polished with a wax or similar compound. These finishes create length similar to balls coated with compound finishes, however they perform far better in today's thicker oils and carrydown. In order to maintain and restore the reaction characteristic of your Brunswick bowling ball, Brunswick recommends the following:

1. To reduce oil absorption, clean your Brunswick ball with Brunswick Remove All or a similar ball cleaner after each use.
2. If you think your Brunswick ball has lost some of its "out of the box" reaction, restore the ball to its original factory finish listed on the product information sheet. This is especially important for balls that are highly sanded or polished. Sand to 400 grit and then use Brunswick Factory Finish High-Gloss Polish to restore the original factory finish on high-gloss polish balls. Sand to 220 grit, then use Brunswick Factory Finish Rough Buff to restore the original factory finish on rough buff balls. For dull balls, wet-sand with the abrasive listed on the product information sheet.
3. If there is a visible track on your ball ask your pro shop to refinish the ball using a Haus Resurfacing System or similar resurfacing machine to remove the track and restore the ball to its original factory finish.*
4. If your ball has more than 50 games on it, you may be able to increase mid-lane and backend hooking action by removing oil from the coverstock. Remove the oil from the ball by cleaning it with Black Magic Rejuvenator or visit your pro shop to have it warmed in the Revivor Oil Extraction Unit.* Brunswick testing has shown by combining the restoration of the factory finish, and the resurfacing of the track and oil removal, your Brunswick ball can maintain its original "out of the box" reaction for hundreds of games. CAUTION: Do not use a home oven to remove oil. Temperatures cannot be adequately controlled and the ball may crack.

5. Absorbent materials sold by other bowling ball manufacturers to remove oil can also be used on Brunswick bowling balls. Information to date indicates that absorbent materials have a more limited ability to remove oil than warming. You may be disappointed with results on heavily oil-soaked balls.

Note: Oil-soaked balls tend to track less in the oil and respond less to the dry boards on the lane. If you are matching-up using an oil-soaked ball on wet/dry or broken-down lane conditions, removing the oil from the ball will significantly change your match-up and possibly create undesirable over reactions.

- * The service is available, for a fee, at many pro shops.

For the most up-to-date product line information visit brunswickbowling.com/balls